



# Sustain Dane's MPower Business Champions Program

GBENN Summit 2016

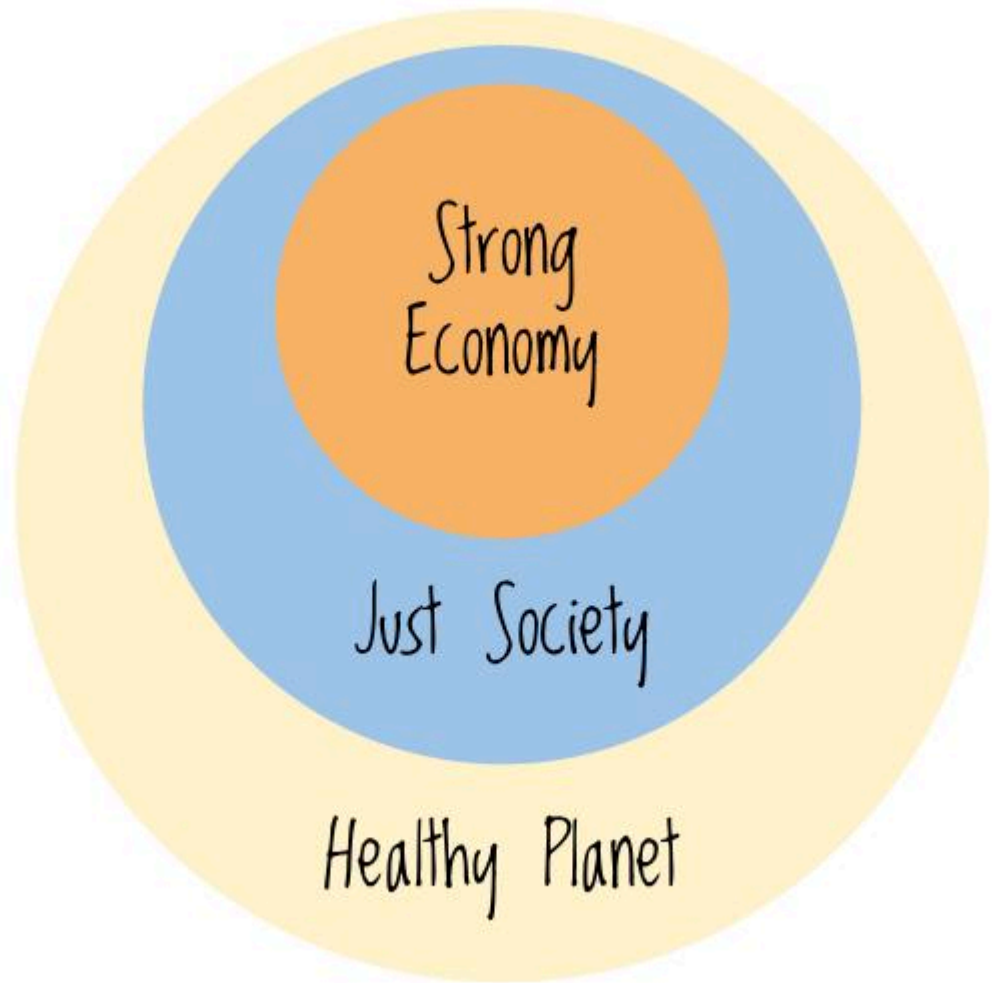
St. Louis, MO – October 19, 2016

**SUSTAIN DANE**  
LIVE FORWARD

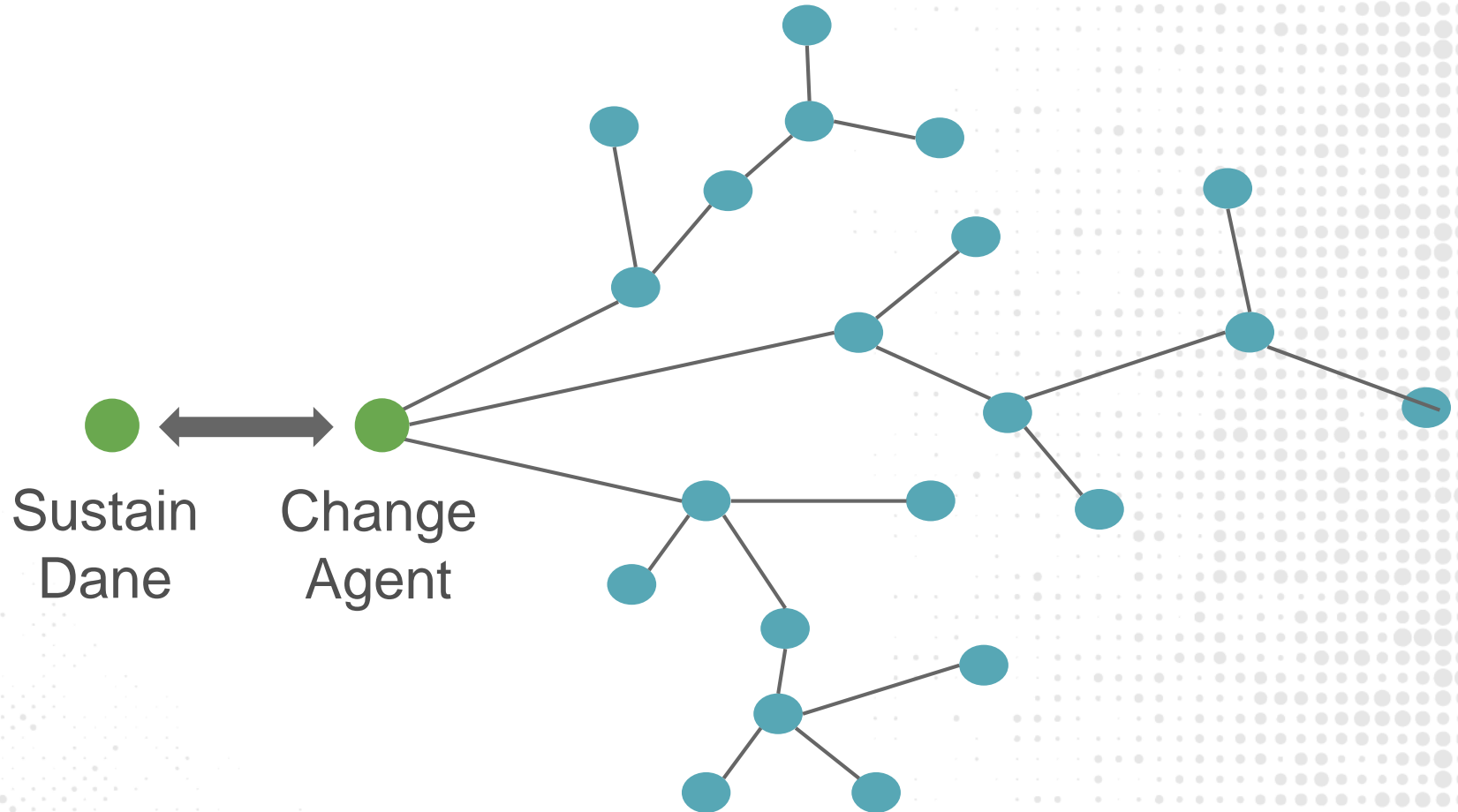


## Our Mission:

To foster a rich and diverse community of sustainability champions.



# Our approach to change





# Sustainable Initiatives:

## Schools



## Neighborhoods

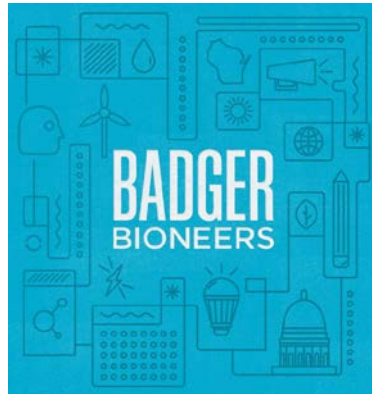


## Businesses



**SUSTAIN DANE**  
LIVE FORWARD





**SUSTAIN DANE**  
LIVE FORWARD

# MPower Background



“The Mpowering Madison Campaign asks the community to reduce green house gas emissions (CO<sub>2</sub>) by 100,000 tons by 2011.”

> 4,000  
Individuals

> 40  
Businesses

**SUSTAIN DANE**  
LIVE FORWARD



# What is MPower?

- One Year
- Customizable
- Reduce Environmental Impact
- Save Costs
- Healthy & Engaged Workplace

MEASURE

LEARN

CONNECT

ACT

TRACK

\$AVE

# One Year Program



# BUSINESS CHAMPIONS

Apr  
May  
Jun  
Jul  
Aug  
Sep  
Oct  
Nov  
Dec  
Jan  
Feb  
Mar

Orientation and Natural Step Training

Energy Stewards Training

Monthly Sustainability Sessions

6 Month Check In Meetings

MPOWER Champions Public Showcase

MPOWER Celebration and Graduation

**SUSTAIN DANE**  
LIVE FORWARD



# MEASURE



# BUSINESS CHAMPIONS



## BUSINESS CHAMPIONS

ENERGY STEWARDS®

[Enroll Your Organization](#)

### MPower Business Champions

SPONSORED BY: [EPA](#), [MADISON GAS AND ELECTRIC](#) AND [CITY OF MADISON](#)

Launched: March 2009

Welcome: **demo**

[HOME](#) [EMAIL OUR ENERGY ADVISOR](#) [HELP](#) [MY ACCOUNT](#) [SIGN OUT](#)

#### BUILDING GROUP

- home
- buildings
- electricity use
- gas use
- energy production
- water use
- ENERGY STAR®
- action tables

[FORUMS](#)

[RESOURCES](#)

#### BUILDINGS IN OUR GROUP

##### Summary Results to Date

Total Active Buildings: **21**  
Tracking Transportation: **5**  
Tracking Water Use: **16**  
Tracking On-Site Production: **2**  
Actions Taken/% of Total: **399 / 17%**

Change from Baseline Year: **Energy Use 0.03%**  
Energy Cost (12 months): **\$3,976,351**

Subset  Building Type  Baseline Year ending

Click a heading to sort the list of buildings.

Building	Change from Baseline: Energy Use	Actions Taken/ % of Total	Current ENERGY STAR® Rating	\$/SqFt	Last Complete Month
<a href="#">Tutto Pasta on State Street</a>	-29.8%	2/2%	NA	\$6.97	3/2014
<a href="#">Uniek, Inc.</a>	-19.1%	50/60%	NA	\$3.19	7/2014
<a href="#">GHC - Hatchery Hill</a>	-19.0%	27/25%	18	\$3.57	1/2014
<a href="#">Monona City Hall</a>	-11.6%	0/0%	35	\$1.83	3/2014
<a href="#">GHC - Excelsior</a>	-9.9%	37/35%	43	\$2.20	1/2014
<a href="#">Research Products -</a>	-4.2%	16/13%	66	\$2.11	6/2014

**SUSTAIN DANE**  
LIVE FORWARD

LEARN



# BUSINESS CHAMPIONS



**SUSTAIN DANE**  
LIVE FORWARD

CONNECT



BUSINESS  
CHAMPIONS

SHOPBOP

**UW**Health

Sustainability Session:  
Energy Efficiency

**SUSTAIN DANE**  
LIVE FORWARD

CONNECT

# Partner Resources

MADISON  *cycl*



 **Green  
Masters  
Program**

 **UNIVERSITY OF WISCONSIN  
EDUCATION CE**



**Office of Susta**  
UNIVERSITY OF WISCONSIN

**focus on er. GREEN TIER**

Partnering with Wisconsin utilities RE ETC.



UNIVE  
**Energy Institute**  
TECHNOLOGY • RESOURCES • SUSTAINABILITY

**SUSTAIN DANE**  
LIVE FORWARD



ACT



# BUSINESS CHAMPIONS

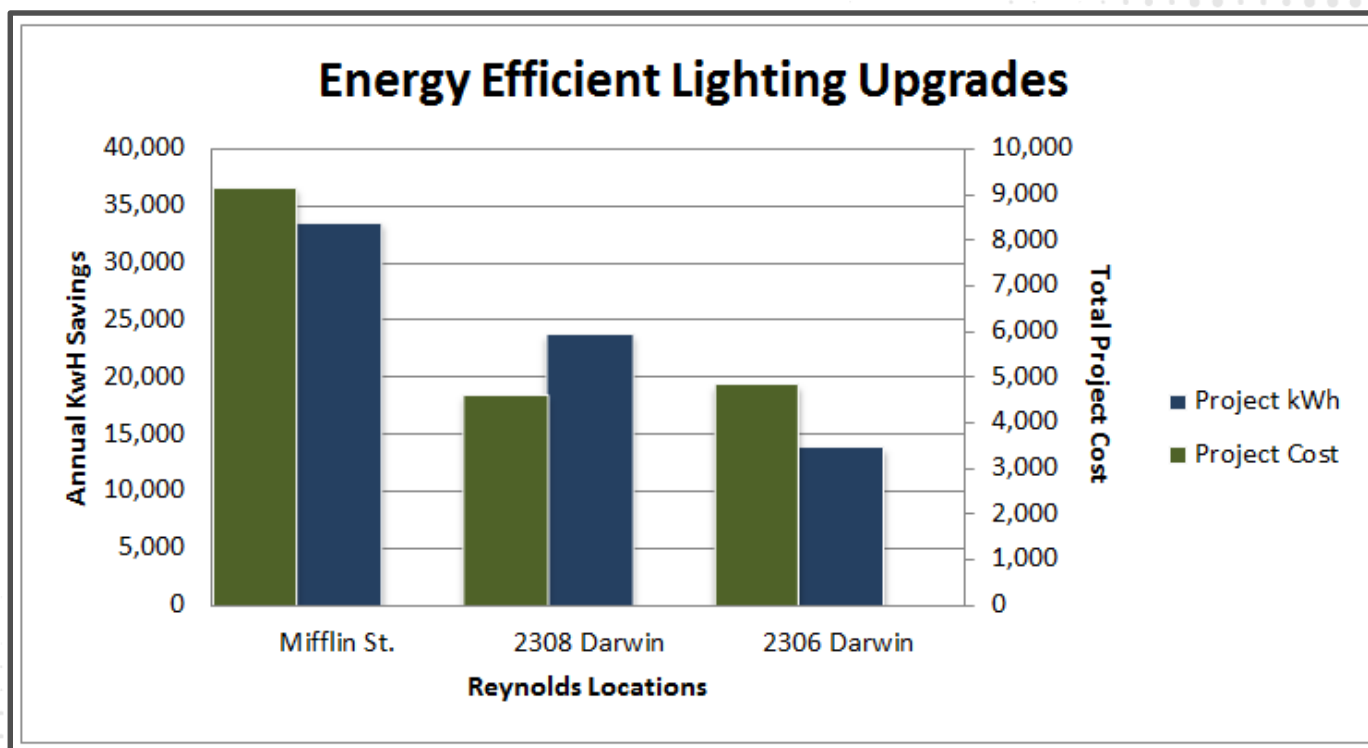


**SUSTAIN DANE**  
LIVE FORWARD

TRACK



# BUSINESS CHAMPIONS



**SUSTAIN DANE**  
LIVE FORWARD

**\$AVE**



# BUSINESS CHAMPIONS

Year	Peak Demand Cost	Ave Cost per Day	Total Electrical Cost
2010	\$49,018.22	\$134.08	\$170,578.49
2011	\$44,703.67	\$122.02	\$176,220.45
2012	\$41,565.44	\$113.32	\$160,274.82
2013	\$38,895.46	\$106.12	\$133,629.27

Diff      \$10,122.77      \$27.96      \$36,949.22

**Total Savings for Peak Demand Project = \$47,071.99**





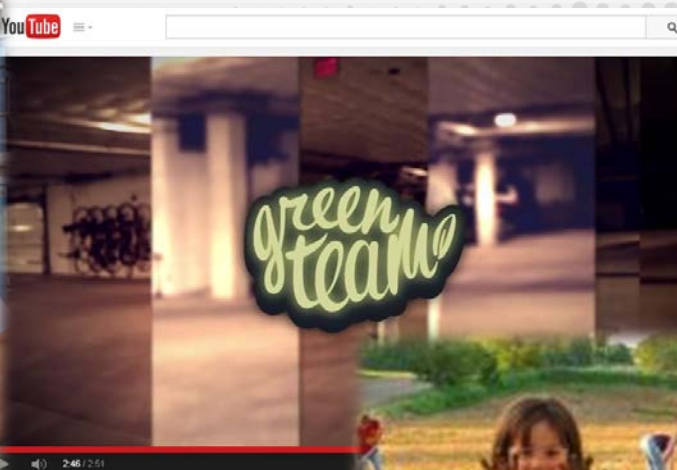
# BUSINESS CHAMPIONS







# M BUSINESS POWER CHAMPIONS



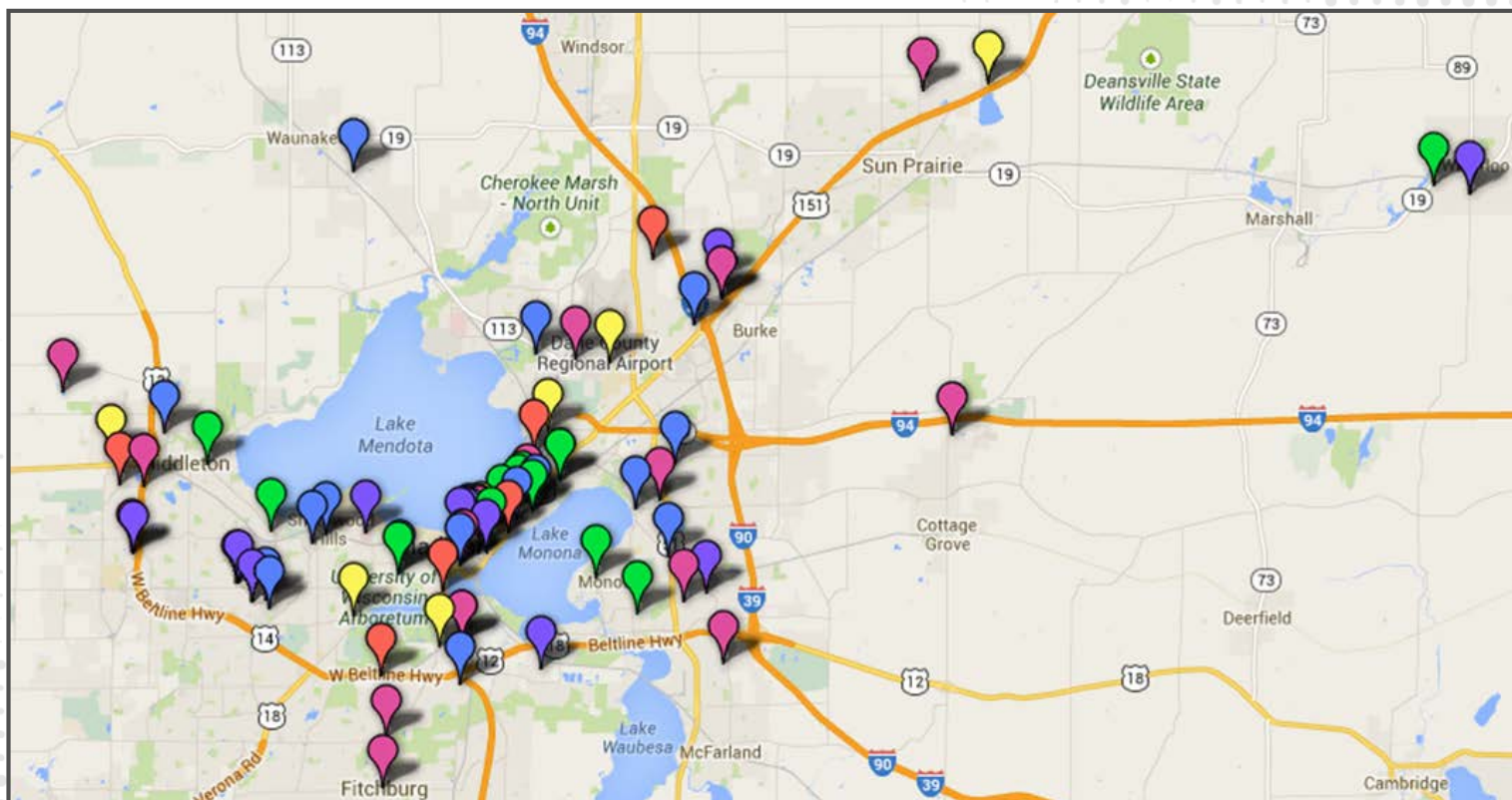
**SUSTAIN DANE**  
LIVE FORWARD





# BUSINESS CHAMPIONS

## 90 MPower Champions, 2009 - 2016

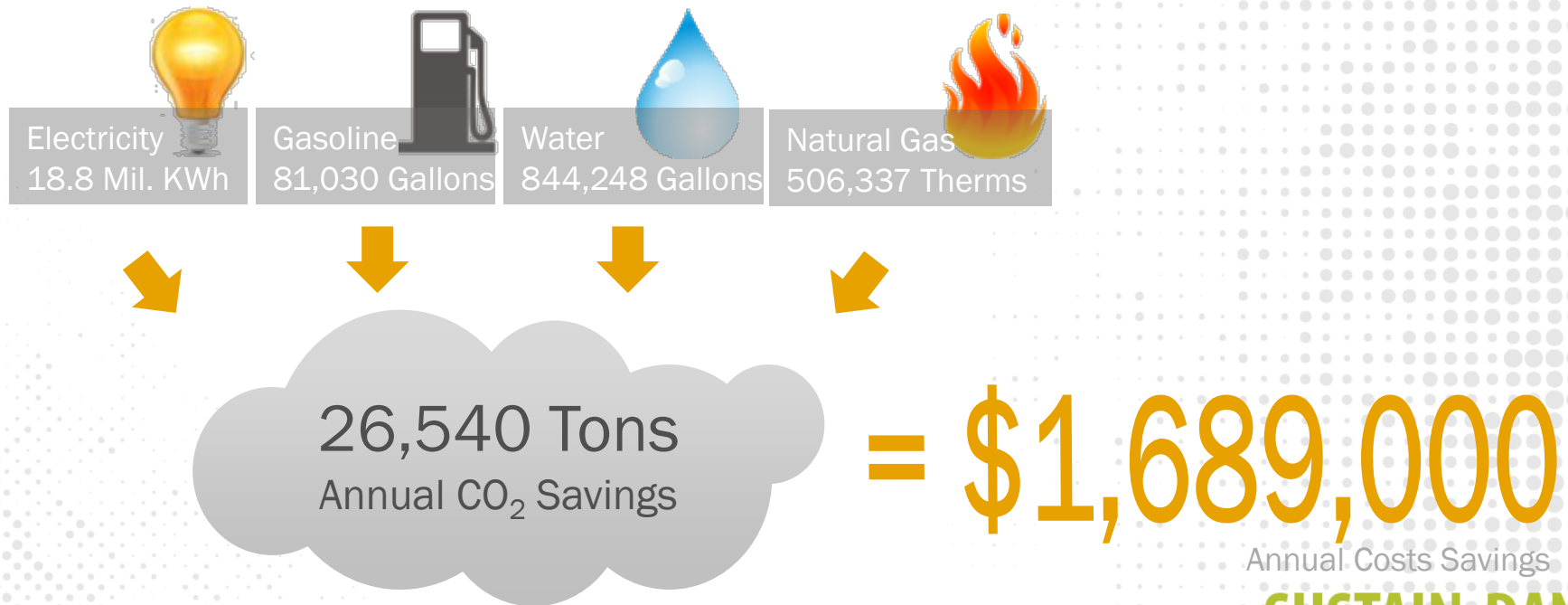


**DANE**

LIVE FORWARD



## Collective Impact: 2009 - 2014



**SUSTAIN DANE**  
LIVE FORWARD



# M BUSINESS POWER CHAMPIONS

## Case Study: Momentum Building



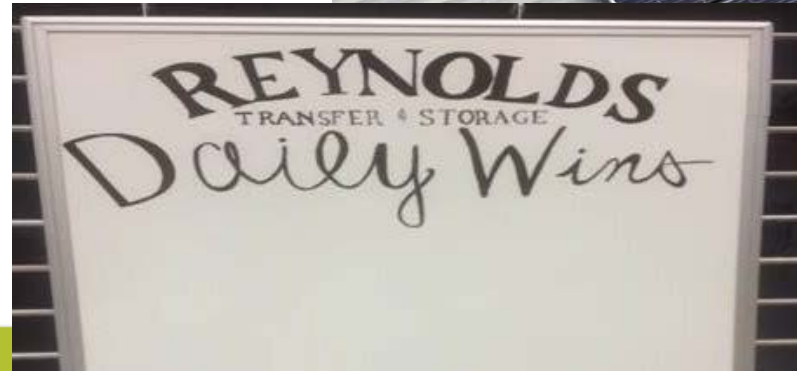
LIVE FORWARD





## Case Study: Energy & Employee Engagement

**REYNOLDS**  
Est. 1888  
TRANSFER & STORAGE  
— INC. —



**IN DANE**  
FORWARD



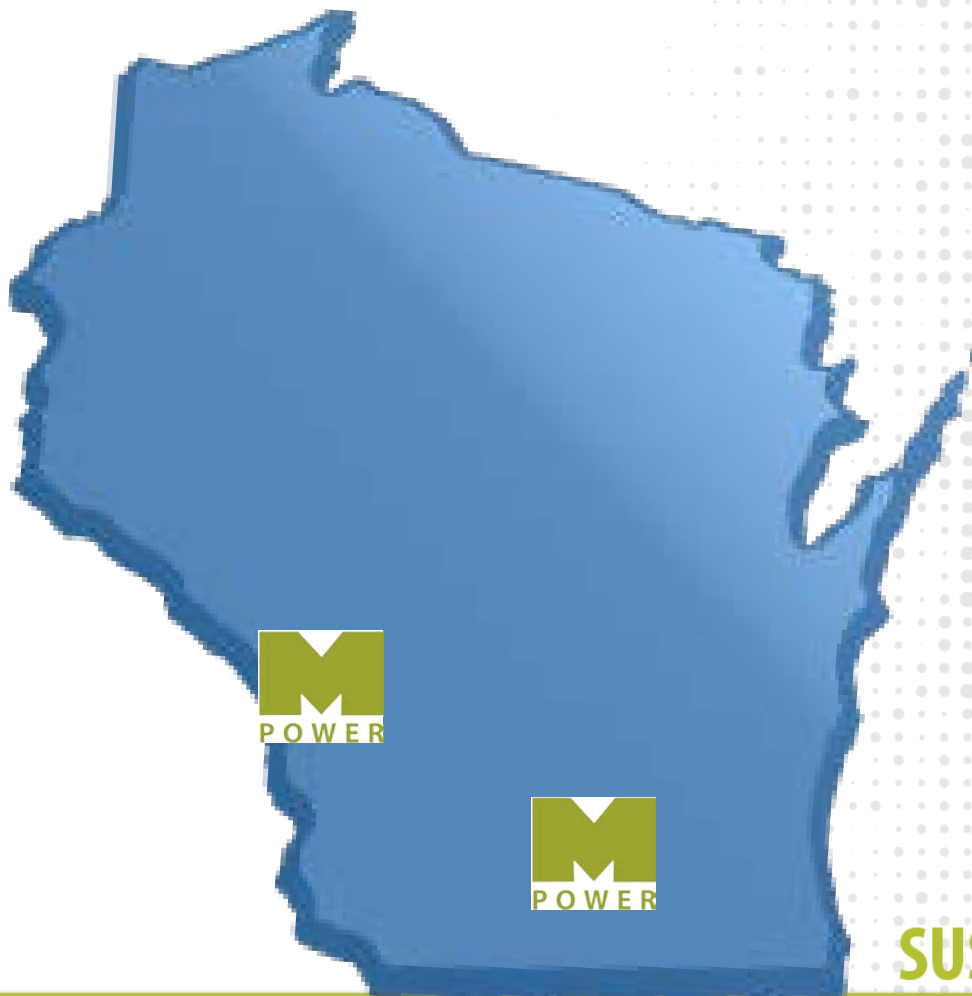
## Case Study: Supply Chain Engagement



NE  
RD



# BUSINESS CHAMPIONS



**SUSTAIN DANE**  
LIVE FORWARD



# MPOWER PROGRAM



In what ways is your organization:

1. Decreasing our dependence on fossil fuels and other material taken from the earth's crust?  

2. Decreasing our dependence on human-made substances that are persistent and toxic?  

3. Decreasing our dependence on activities that physically destroy the environment?  

4. Contributing to opportunities for people to meet their needs?  

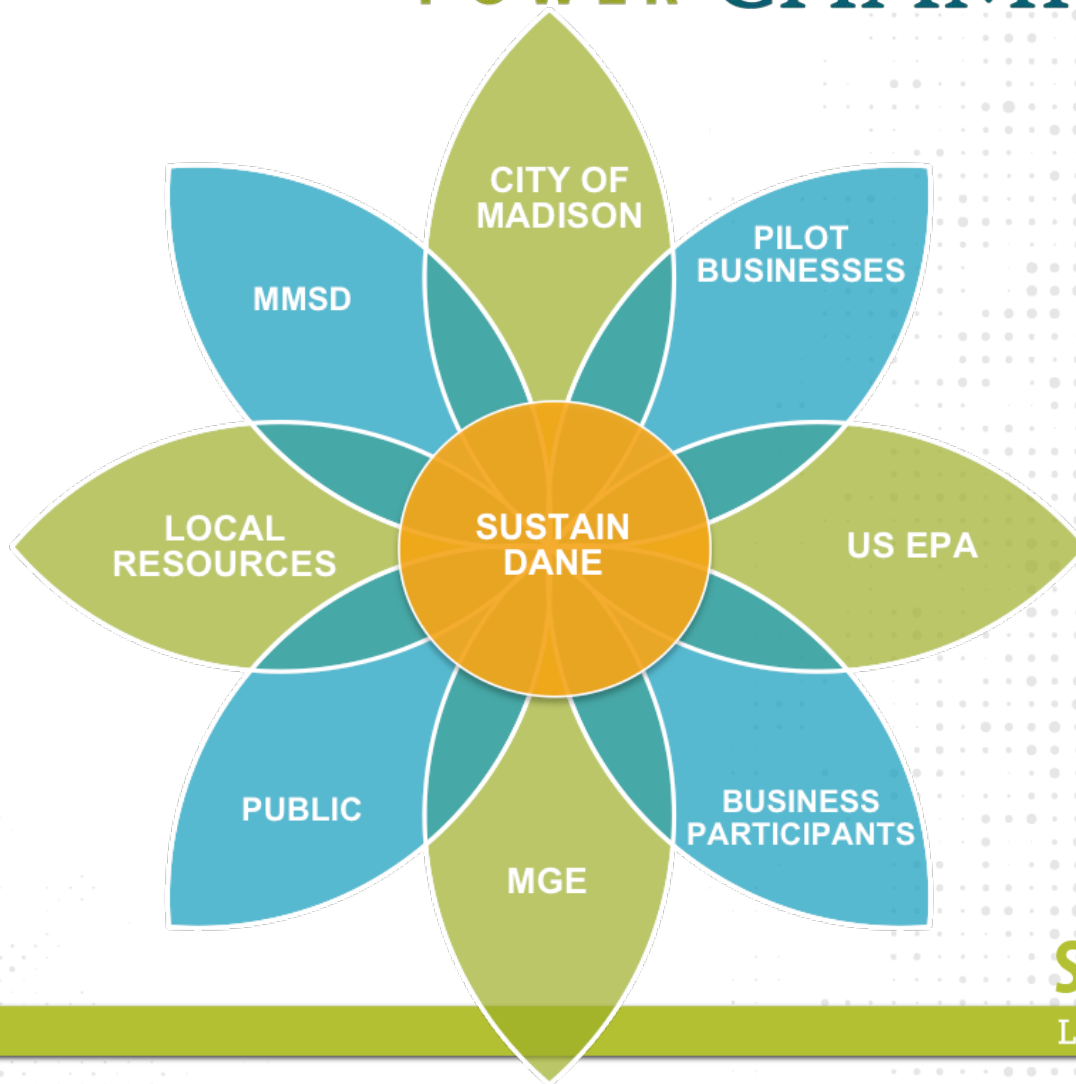

The Sustainability Institute is proud to bring a PROVEN, NATIONALLY RECOGNIZED PROGRAM to the 7 Rivers Region! Please join us as we introduce the MPower Business Champions program to the area in an effort to help launch sustainability within organizations of every type!

**SUSTAIN DANE**  
LIVE FORWARD





# BUSINESS CHAMPIONS



**SUSTAIN DANE**  
LIVE FORWARD

# Partner Relationships



**SUSTAIN DANE**  
LIVE FORWARD

# Partner Relationships

Transportation



Energy Efficiency



**focus on energy**<sup>SM</sup>

Partnering with Wisconsin utilities

Food Choices



**FAIRSHARE**  
CSA COALITION

**SUSTAIN DANE**  
LIVE FORWARD

# Partner Relationships



**SUSTAIN DANE**  
LIVE FORWARD





# Thank you!



**Stacie Reece**

Director Sustainable Business Initiatives

**SUSTAIN DANE**

e: [stacie@sustaindane.org](mailto:stacie@sustaindane.org)

p: [608.819.0689](tel:608.819.0689)

[www.sustaindane.org](http://www.sustaindane.org)

**SUSTAIN DANE**  
LIVE FORWARD