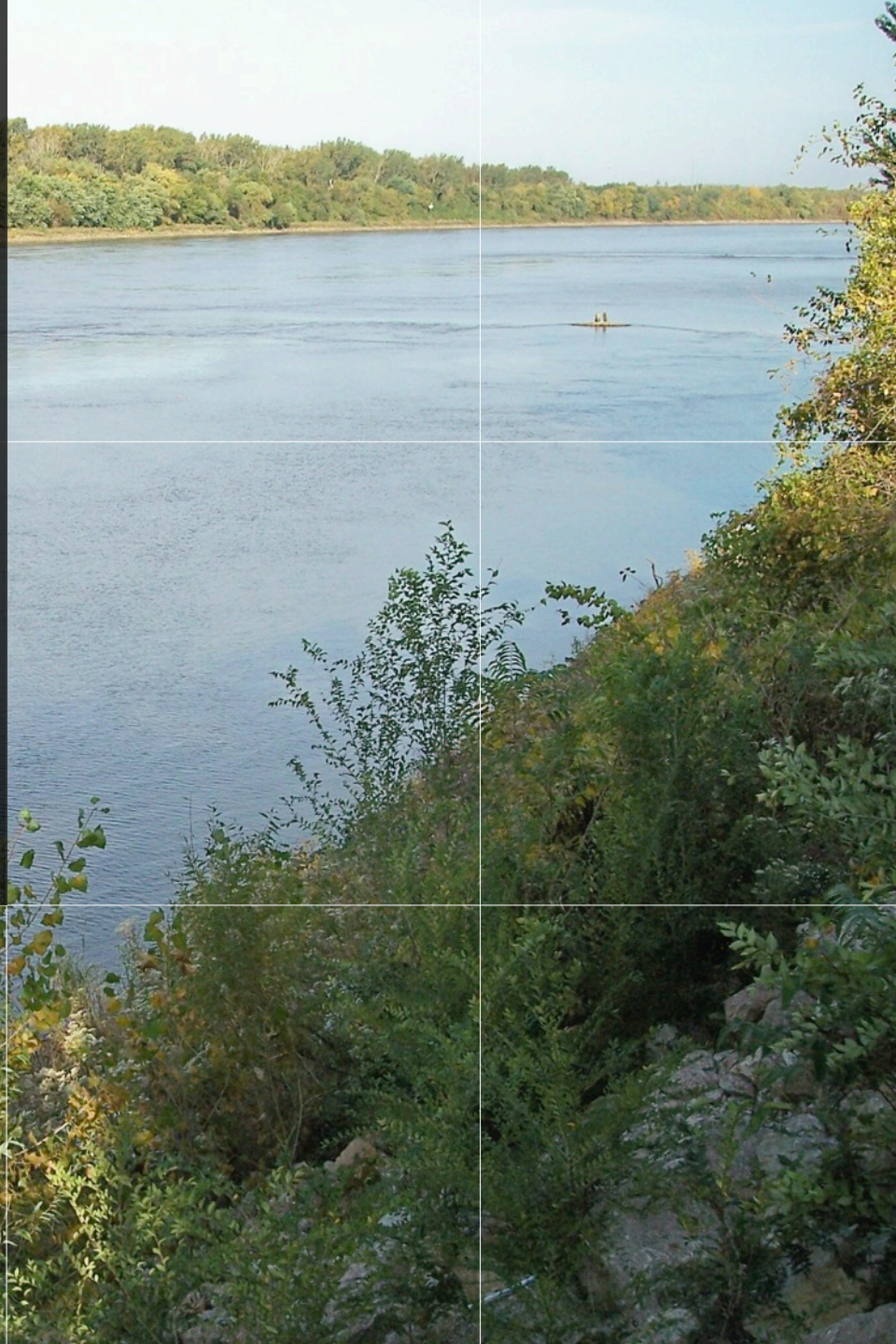


# USGBC CHAPTER RESOURCES FOR BUSINESS GREENING



Missouri  
Gateway  
CHAPTER







Architects

Corporations

Real Estate  
Professionals

Developers

Product  
Manufacturers

Building  
Owners

Federal,  
Local,  
and State  
Governments

Nonprofit Leaders

Planners

Facility  
Managers

# USGBC

Engineers

Project  
Managers

Interior  
Designers

Landscape  
Architects

Utility  
Managers

Financial  
Planners

Building  
Tenants

Property  
Managers

Code  
Officials



## CHAPTER ACTIVITIES AND MEMBERSHIPS

Over **500** chapter members

Monthly Networking and Educational Programs

LEED and Green Building Efforts

Outreach and Advocacy Efforts



Missouri  
Gateway  
CHAPTER



ADVANCE



Missouri  
Gateway  
CHAPTER



# What is Energy Benchmarking?

Tracking your building's energy use and comparing your performance to the past and to similar buildings is called ***BENCHMARKING***



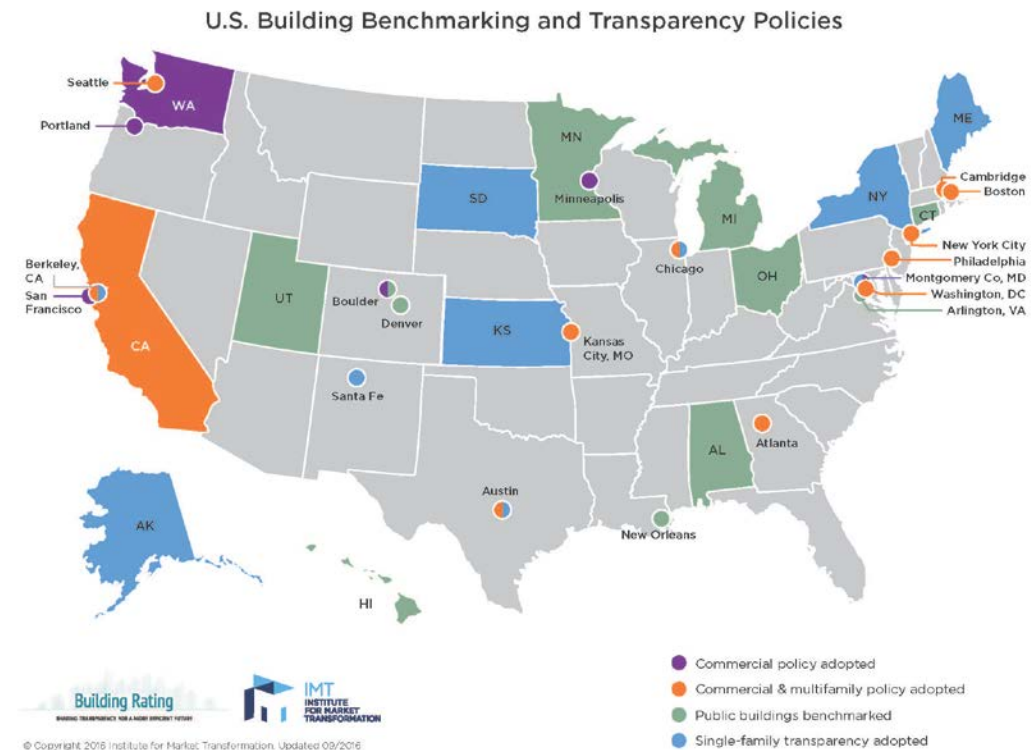
# Who is involved?



# 75 current pledge takers



- 40% of energy consumption & GHG emissions comes from buildings
- Aligns with City's GHG Emission reduction goals



# Support & Recognition

- USGBC educational opportunities (Benchmarking Jams)
- Case Study Success Stories
- Recognition on GBIG website and USGBC website, newsletters & social media
- Assistance from Benchmarking Mentors
- Pro bono consultation from local energy consultants may be available



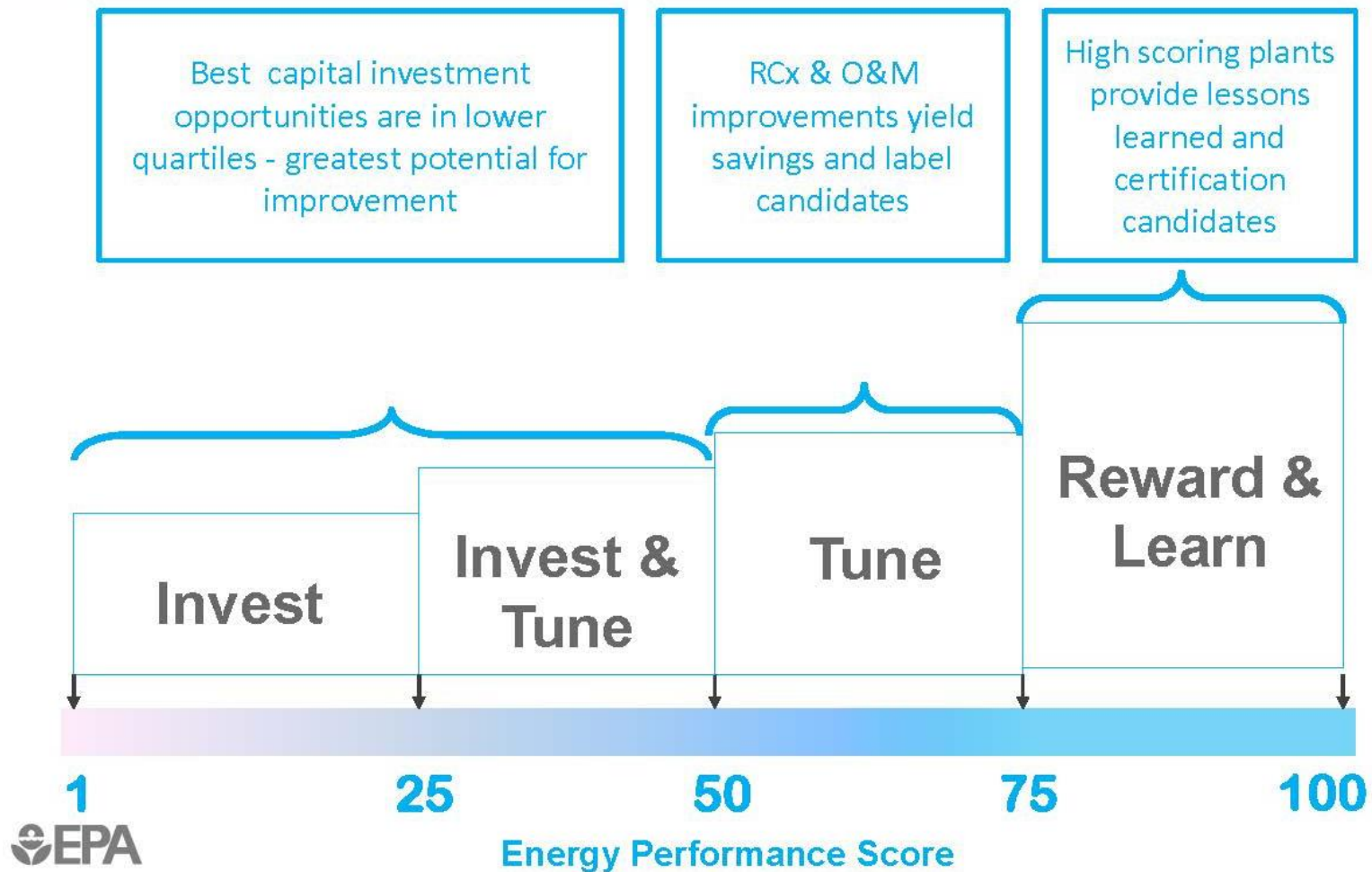
# ENERGY STAR PORTFOLIO MANAGER

[www.energystar.gov/benchmark](http://www.energystar.gov/benchmark)



- ANY type of building can be benchmarked
- You can track energy, water, and waste in Portfolio Manager
- Compare your buildings against a national sample of similar buildings
- Compare building(s) over time, one period to the next
- Set priorities and targets to make the most of limited staff time and/or investment capital
- Gain recognition – many building types can receive 1-100 ENERGY STAR score

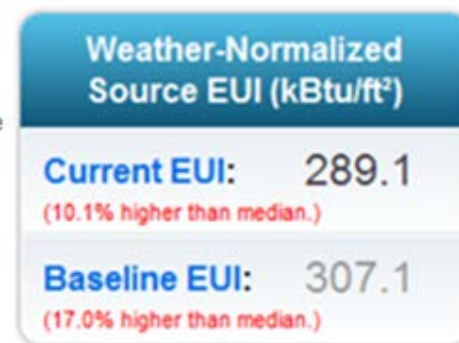
# 1-100 ENERGY STAR Score





# Energy Use Intensity

- Energy used per square foot
- Compare to national median EUI for your property type



# Contacting the Chapter

**Johanna Schweiss**

Volunteer & Outreach Coordinator  
USGBC-Missouri Gateway Chapter  
4651 Shaw Blvd.  
St. Louis, MO 6310  
[Johanna.schweiss@mobot.org](mailto:Johanna.schweiss@mobot.org)  
[www.usgbc-mogateway.org](http://www.usgbc-mogateway.org)



Missouri  
Gateway  
CHAPTER